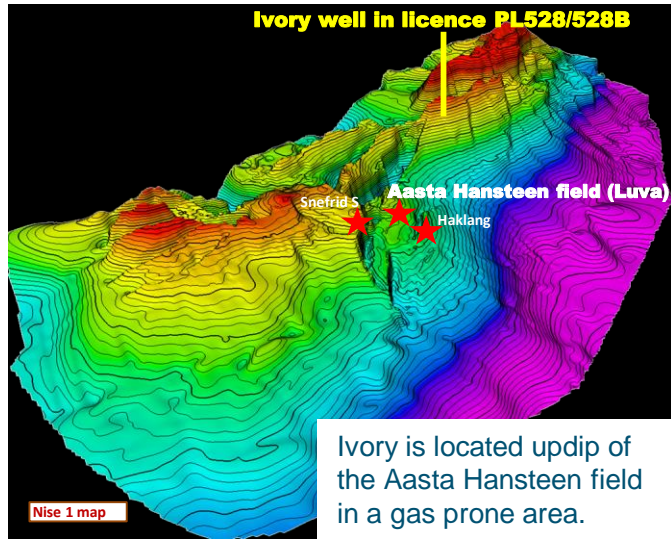


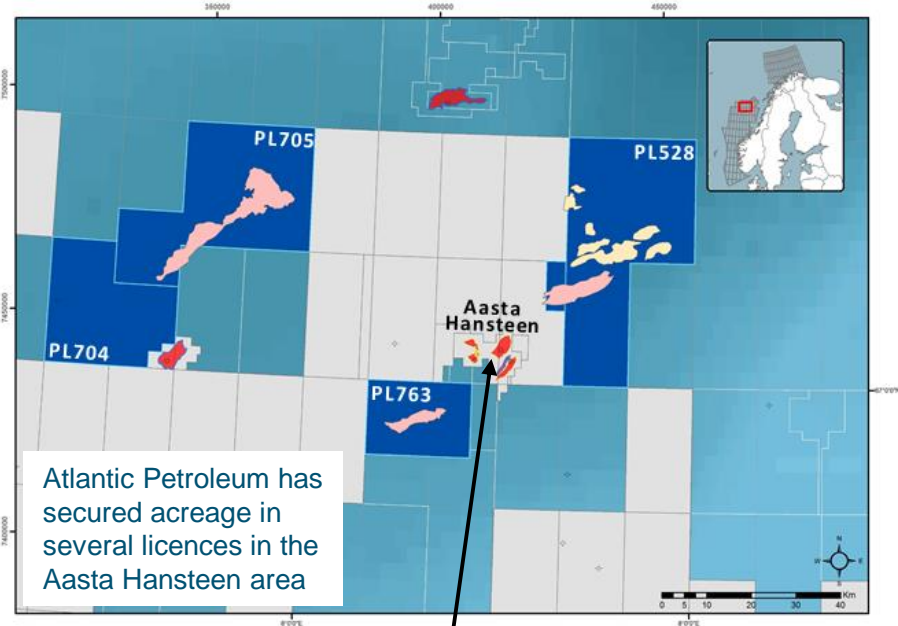
# BUILDING A POSITION AROUND NEW INFRASTRUCTURE



ATLANTIC PETROLEUM

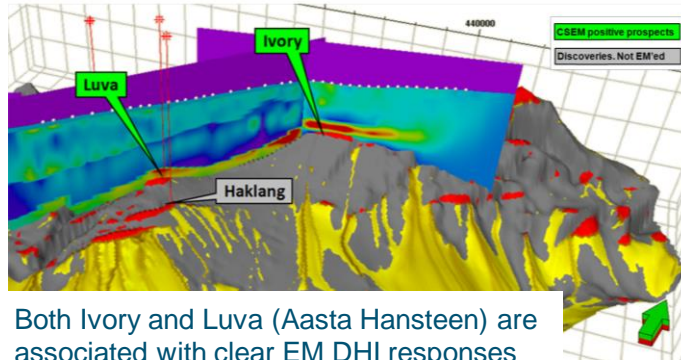


Ivory is located updip of the Aasta Hansteen field in a gas prone area.



Atlantic Petroleum has secured acreage in several licences in the Aasta Hansteen area

Figure from Rystad Energy BD atlas (source Rocksource)



Both Ivory and Luva (Aasta Hansteen) are associated with clear EM DHI responses that fit migration modeling results.



Gas export through the Polarled pipeline planned to be in operation from Aasta Hansteen to Nyhamna 2017 (or late 2016)