



Stockholm Monthly Fixed Income Report

January 2008

Contents

Sthlm FI Market	Overview of the Stockholm fixed income market
Retail Bonds	
Retail Bonds Total	Trading figures for Retail Bonds, summary
Structured Products	Trading figures for the Retail Bonds Structured Products submarket
Retail Bonds Yield	Trading figures for the Retail Bonds Yield submarket
Retail Bonds Price	Trading figures for the Retail Bonds Price submarket
Institutional Bonds	
Benchmark Bonds	Trading figures for the Benchmark Bonds submarket

Contacts

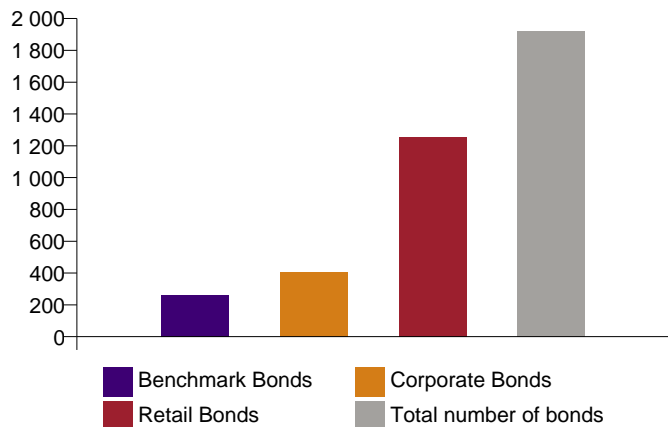
For questions on the report, please contact marketresearch@omxgroup.com

For questions regarding the FI market please see <http://www.omxgroup.com/nordicexchange/products/fixedincomemarket/> for contact information

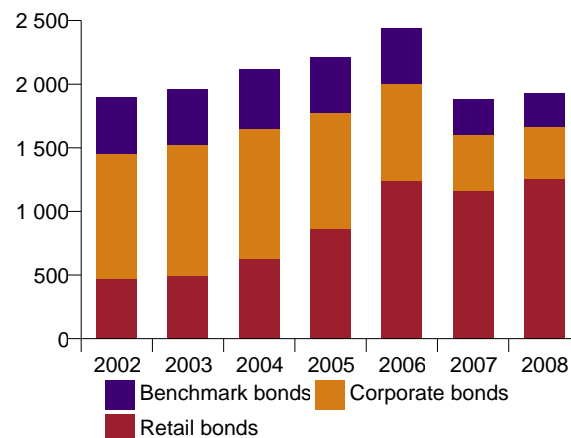


Total number of bonds outstanding

(as of January 2008)

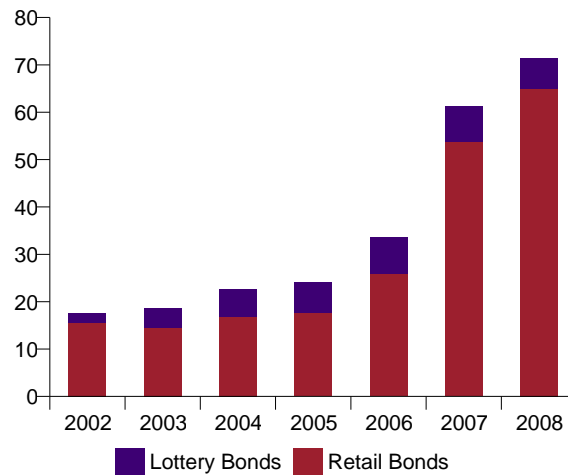
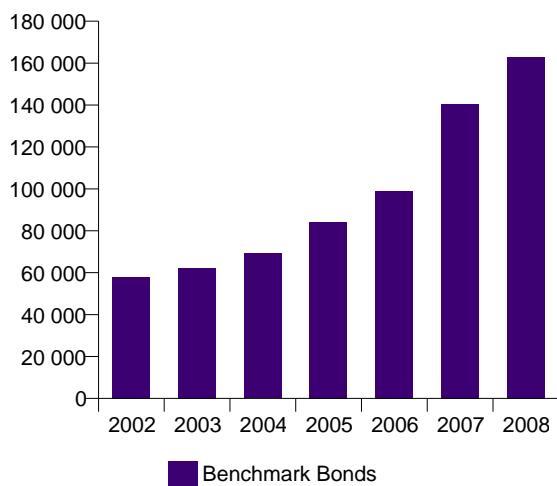


(2002-2008)



Total Turnover, MSEK, daily averages

(2002-2008)



Note: Benchmark Bonds include: Certificates, Government bonds, Inflation linked bonds, Mortgage bonds and T-bills

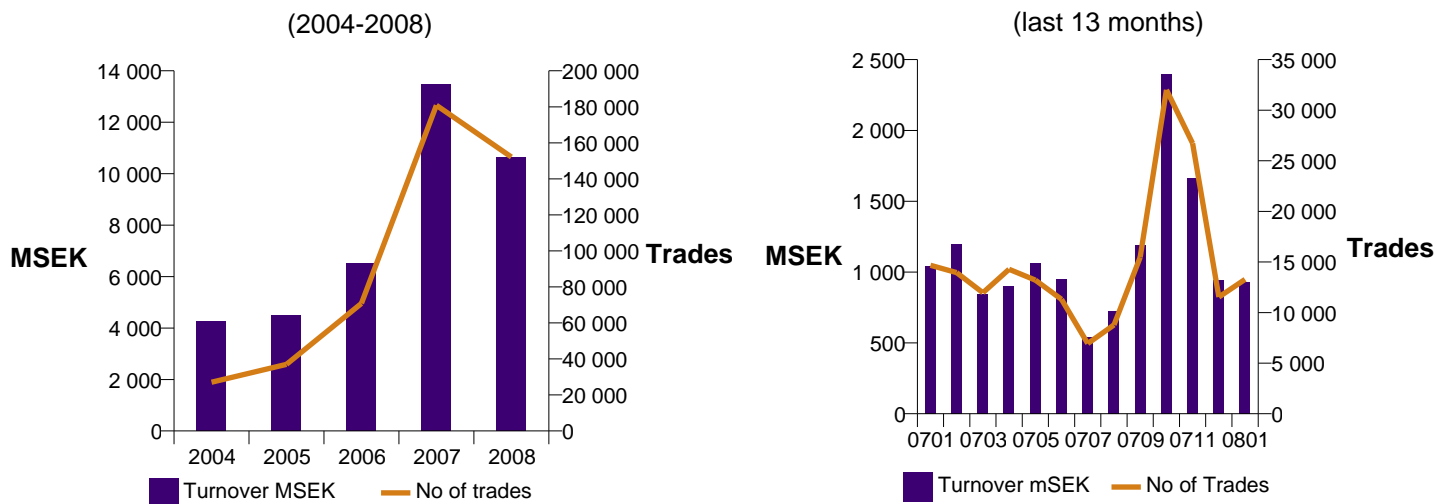


Retail Bonds Total

Trading during the latest month

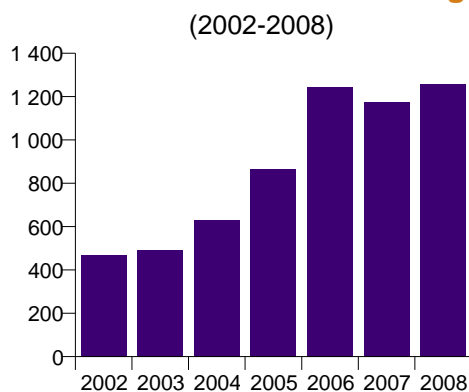
Turnover, MSEK	928
Nbr. of trades	13 283

Nominal turnover and number of trades



Note: Annual turnover 2008 is estimated (based on 22 out of 252 trading days)

Nbr of bonds outstanding



Number of bonds outstanding as of January 2008: 1 284

Market Shares, Top 5 in turnover

Member	January	YTD
Skandinaviska Enskilda Banken AB	40,98 %	40,98 %
Swedbank AB	22,60 %	22,60 %
Nordea Bank	15,06 %	15,06 %
HQ Bankaktiefbolag	7,31 %	7,31 %
Svenska Handelsbanken AB	4,39 %	4,39 %
Other	9,65 %	9,65 %

Market Shares, Top 5 in No of trades

Member	January	YTD
Skandinaviska Enskilda Banken AB	38,20 %	38,20 %
Swedbank AB	32,73 %	32,73 %
Nordea Bank	14,78 %	14,78 %
Svenska Handelsbanken AB	3,89 %	3,89 %
HQ Bankaktiefbolag	3,81 %	3,81 %
Other	6,59 %	6,59 %

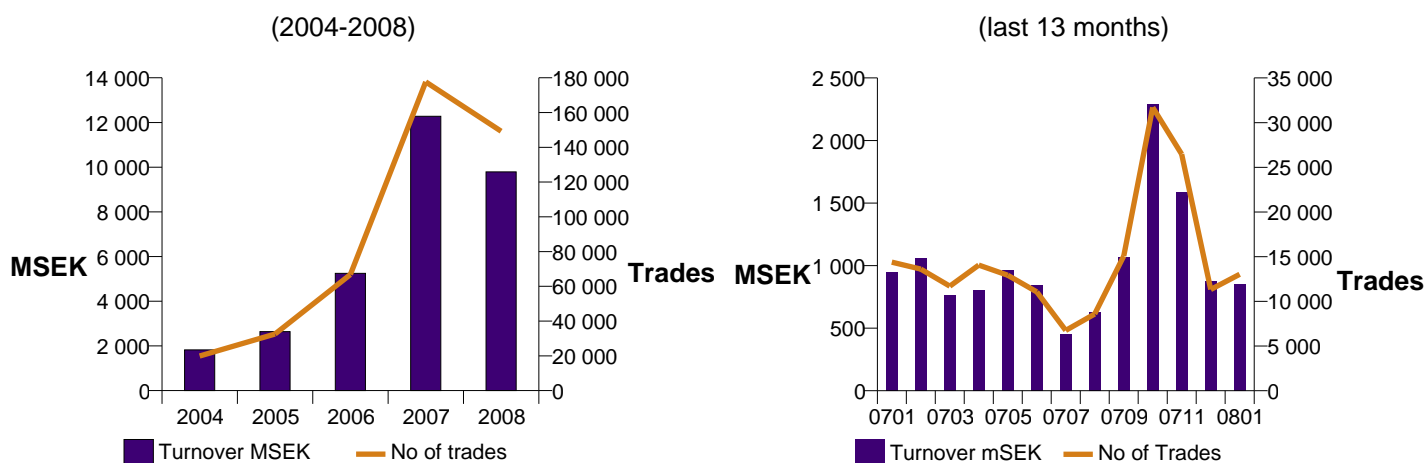


Retail Bonds Structured Products

Trading during the latest month

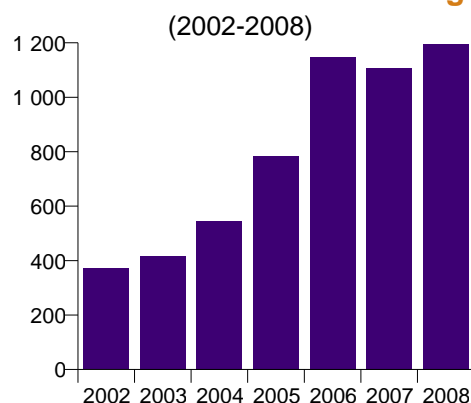
Turnover, MSEK	855
Nbr. of trades	13 032

Nominal turnover and number of trades



Note: Annual turnover 2008 is estimated (based on 22 out of 252 trading days)

Nbr of bonds outstanding



Number of bonds outstanding as of January 2008: 1 220

Market Shares, Top 5 in turnover

Member	January	YTD
Skandinaviska Enskilda Banken AB	40,19 %	40,19 %
Swedbank AB	23,86 %	23,86 %
Nordea Bank	15,52 %	15,52 %
HQ Bankaktiebolag	7,92 %	7,92 %
Svenska Handelsbanken AB	3,60 %	3,60 %
Other	8,91 %	8,91 %

Market Shares, Top 5 in No of trades

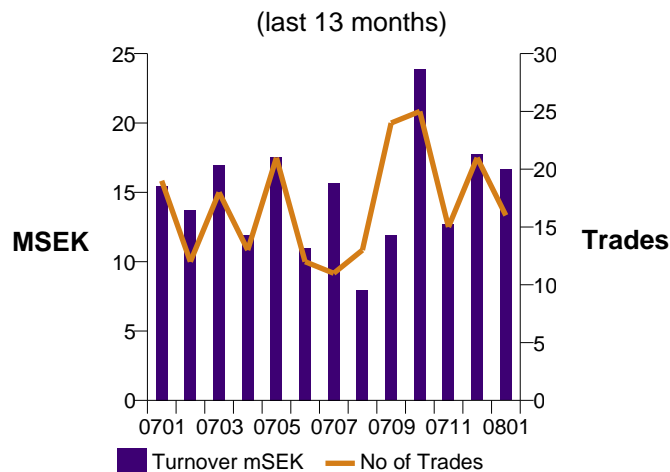
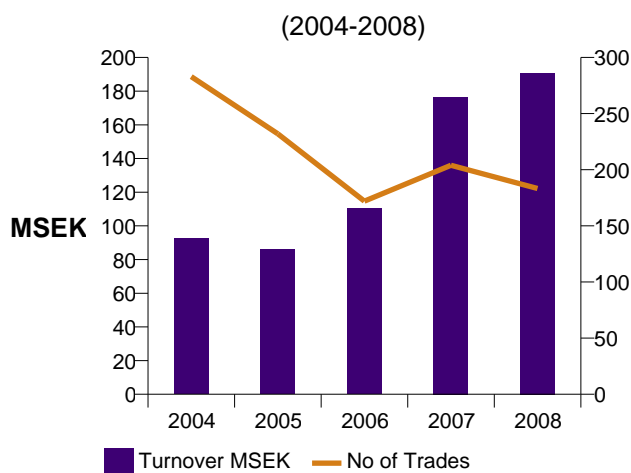
Member	January	YTD
Skandinaviska Enskilda Banken AB	38,18 %	38,18 %
Swedbank AB	33,00 %	33,00 %
Nordea Bank	14,84 %	14,84 %
HQ Bankaktiebolag	3,88 %	3,88 %
Svenska Handelsbanken AB	3,57 %	3,57 %
Other	6,54 %	6,54 %



Trading during the latest month

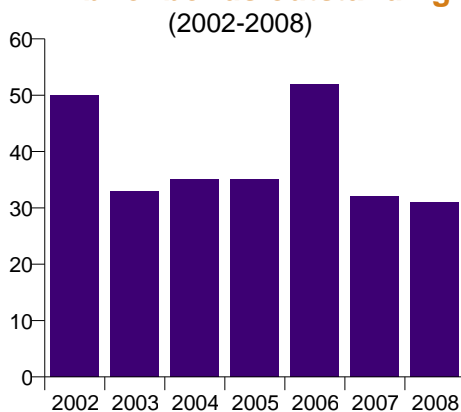
Turnover, MSEK	17
Nbr. of trades	16

Nominal turnover and number of trades



Note: Annual turnover 2008 is estimated (based on 22 out of 252 trading days)

Nbr of bonds outstanding



Number of bonds outstanding as of January 2008: 32

Market Shares, Top 5 in turnover

Member	January	YTD
Skandinaviska Enskilda Banken AB	49,85 %	49,85 %
Nordnet Bank AB	42,94 %	42,94 %
Avanza Bank AB	3,00 %	3,00 %
Danske Bank A/S	1,80 %	1,80 %
Nordea Bank	1,32 %	1,32 %
Other	1,08 %	1,08 %

Market Shares, Top 5 in No of trades

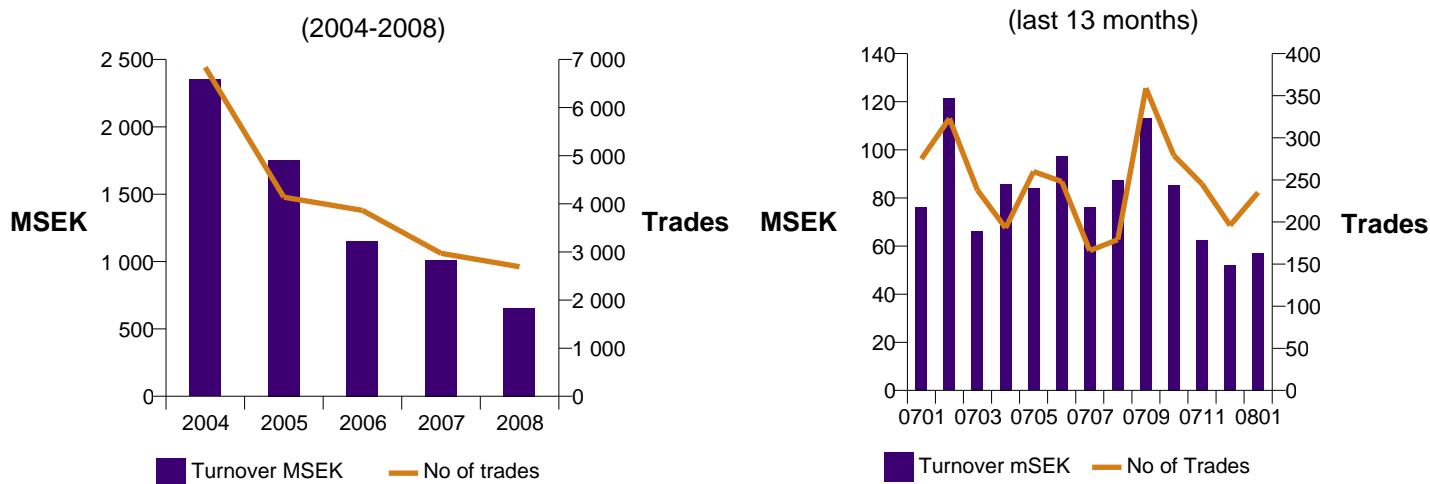
Member	January	YTD
Skandinaviska Enskilda Banken AB	46,88 %	46,88 %
Nordnet Bank AB	25,00 %	25,00 %
Svenska Handelsbanken AB	18,75 %	18,75 %
Danske Bank A/S	3,13 %	3,13 %
Nordea Bank	3,13 %	3,13 %
Other	3,13 %	3,13 %



Trading during the latest month

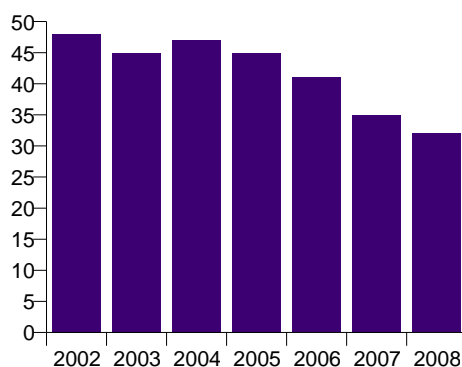
Turnover, MSEK	57
Nbr. of trades	235

Nominal turnover and number of trades



Note: Annual turnover 2008 is estimated (based on 22 out of 252 trading days)

Nbr of bonds outstanding (2002-2008)



Number of bonds outstanding as of January 2008: 32

Market Shares, Top 5 in turnover

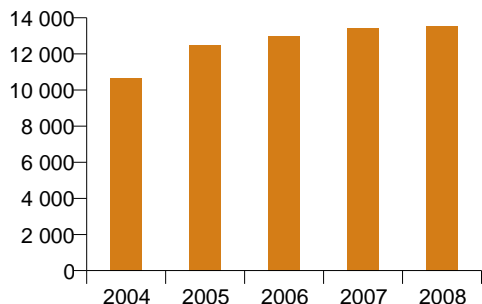
Member	January	YTD
Skandinaviska Enskilda Banken AB	50,30 %	50,30 %
Svenska Handelsbanken AB	17,13 %	17,13 %
Nordea Bank	12,27 %	12,27 %
Swedbank AB	10,40 %	10,40 %
Danske Bank A/S	7,80 %	7,80 %
Other	2,10 %	2,10 %

Market Shares, Top 5 in No of trades

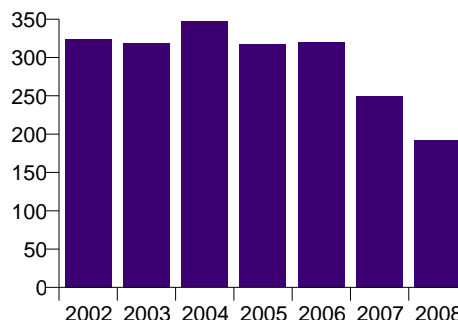
Member	January	YTD
Skandinaviska Enskilda Banken AB	38,94 %	38,94 %
Svenska Handelsbanken AB	20,64 %	20,64 %
Swedbank AB	20,00 %	20,00 %
Nordea Bank	12,34 %	12,34 %
Danske Bank A/S	4,26 %	4,26 %
Other	3,83 %	3,83 %



Total nominal turnover in SEK billion
(2004-2008)



Nbr of bonds outstanding
(2002-2008)

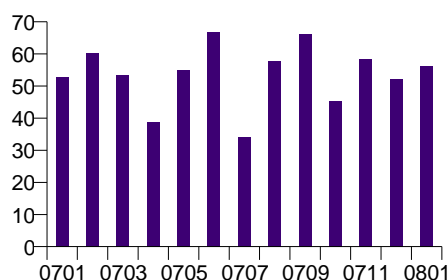


Note: Annual turnover 2008 is estimated (based on 22 out of 252 trading days)

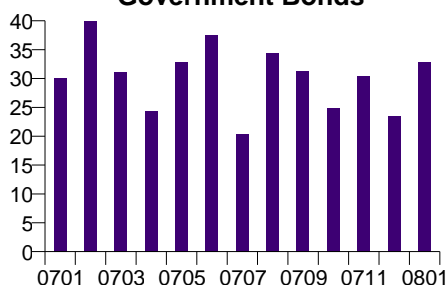
Nominal turnover, daily averages in SEK billion

(last 13 months)

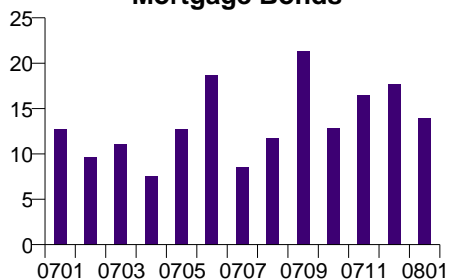
Total



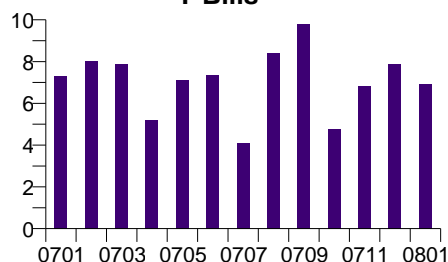
Government Bonds



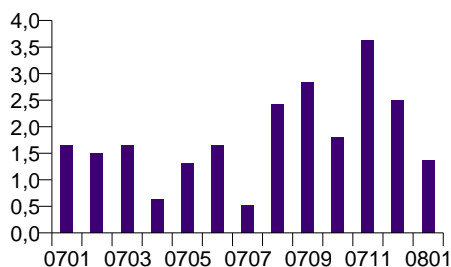
Mortgage Bonds



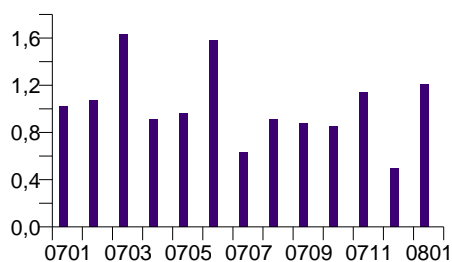
T-Bills



Certificates



Inflation Linked Bonds



Note: Benchmark Bonds include: Certificates, Government bonds, Inflation linked bonds, Mortgage bonds and T-bills