



# Stockholm Monthly Fixed Income Report

February 2008

## Contents

Sthlm FI Market	Overview of the Stockholm fixed income market
<b>Retail Bonds</b>	
Retail Bonds Total	Trading figures for Retail Bonds, summary
Structured Products	Trading figures for the Retail Bonds Structured Products submarket
Retail Bonds Yield	Trading figures for the Retail Bonds Yield submarket
Retail Bonds Price	Trading figures for the Retail Bonds Price submarket
<b>Institutional Bonds</b>	
Benchmark Bonds	Trading figures for the Benchmark Bonds submarket

## Contacts

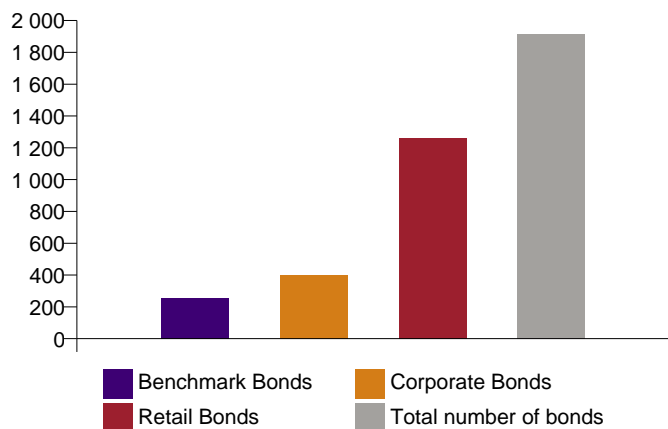
For questions on the report, please contact [marketresearch@omxgroup.com](mailto:marketresearch@omxgroup.com)

For questions regarding the FI market please see <http://www.omxgroup.com/nordicexchange/products/fixedincomemarket/> for contact information

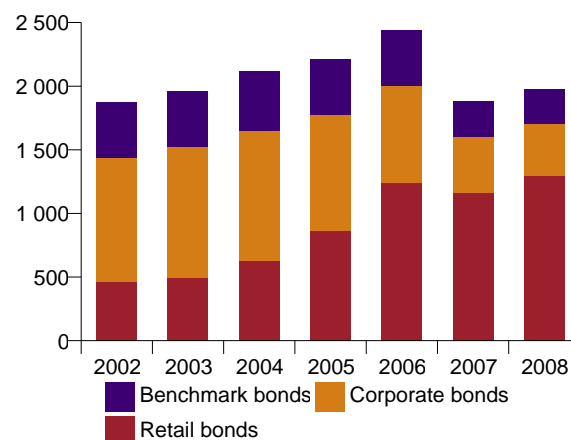


### Total number of bonds outstanding

(as of February 2008)

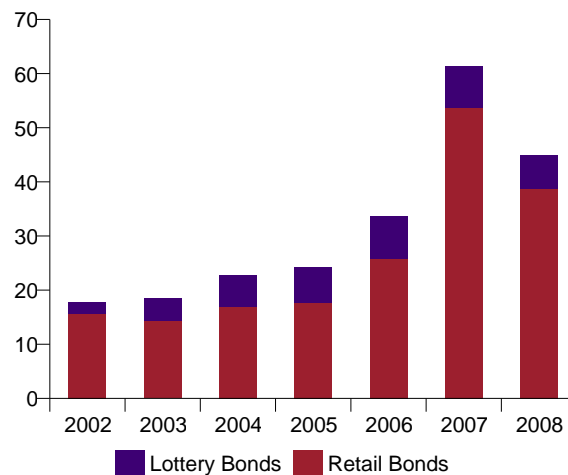
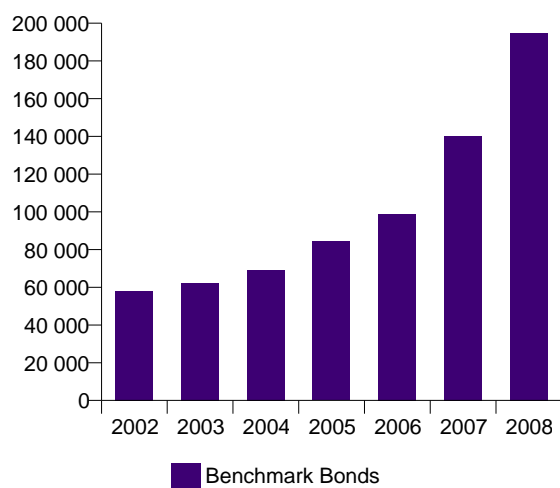


(2002-2008)



### Total Turnover, MSEK, daily averages

(2002-2008)



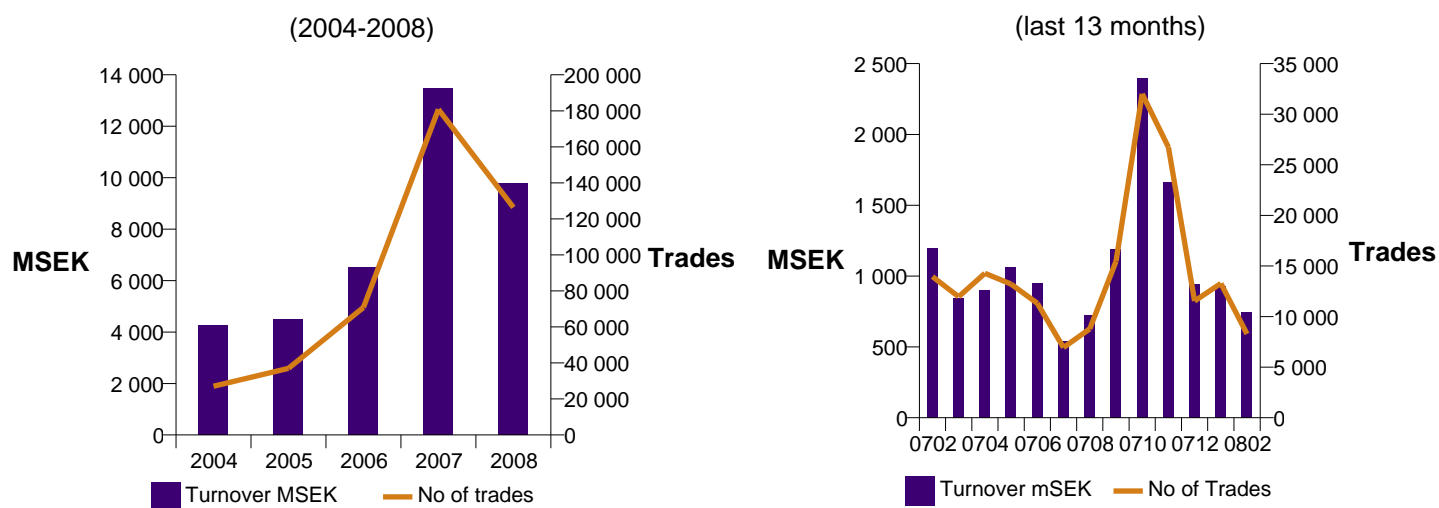
Note: Benchmark Bonds include: Certificates, Government bonds, Inflation linked bonds, Mortgage bonds and T-bills



### Trading during the latest month

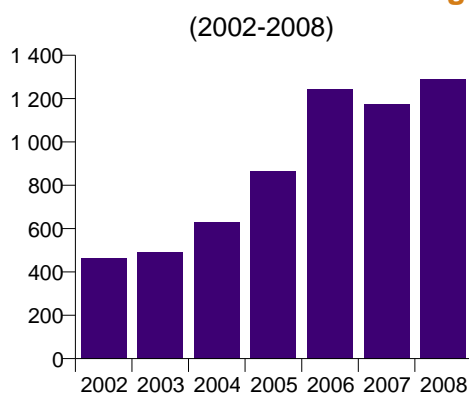
Turnover, MSEK	743
Nbr. of trades	8 284

### Nominal turnover and number of trades



Note: Annual turnover 2008 is estimated (based on 43 out of 252 trading days)

### Nbr of bonds outstanding



Number of bonds outstanding as of February 2008: 1 291

### Market Shares, Top 5 in turnover

Member	February	YTD
Skandinaviska Enskilda Banken AB	46,84 %	43,59 %
Swedbank AB	16,69 %	19,98 %
Nordea Bank	11,83 %	13,63 %
HQ Bankaktiefbolag	7,93 %	7,58 %
Öhman J:or Fondkommission AB, E.	6,66 %	3,01 %
Other	10,04 %	12,21 %

### Market Shares, Top 5 in No of trades

Member	February	YTD
Skandinaviska Enskilda Banken AB	38,10 %	38,16 %
Swedbank AB	34,46 %	33,40 %
Nordea Bank	14,21 %	14,56 %
HQ Bankaktiefbolag	4,11 %	3,92 %
Svenska Handelsbanken AB	3,59 %	3,77 %
Other	5,53 %	6,18 %

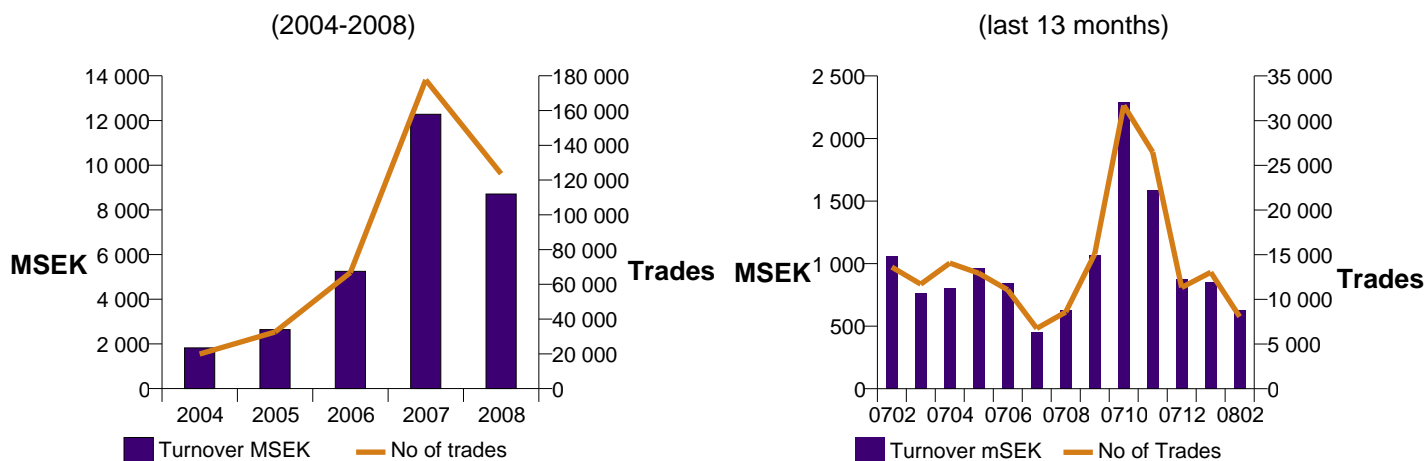


## Retail Bonds Structured Products

### Trading during the latest month

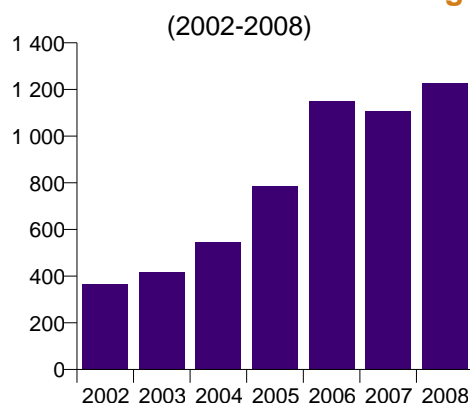
Turnover, MSEK	632
Nbr. of trades	8 070

### Nominal turnover and number of trades



Note: Annual turnover 2008 is estimated (based on 43 out of 252 trading days)

### Nbr of bonds outstanding



Number of bonds outstanding as of February 2008: 1 225

### Market Shares, Top 5 in turnover

Member	February	YTD
Skandinaviska Enskilda Banken AB	49,37 %	44,09 %
Swedbank AB	19,27 %	21,91 %
Nordea Bank	13,12 %	14,50 %
HQ Bankaktiebolag	9,32 %	8,52 %
Svenska Handelsbanken AB	3,32 %	3,48 %
Other	5,60 %	7,50 %

### Market Shares, Top 5 in No of trades

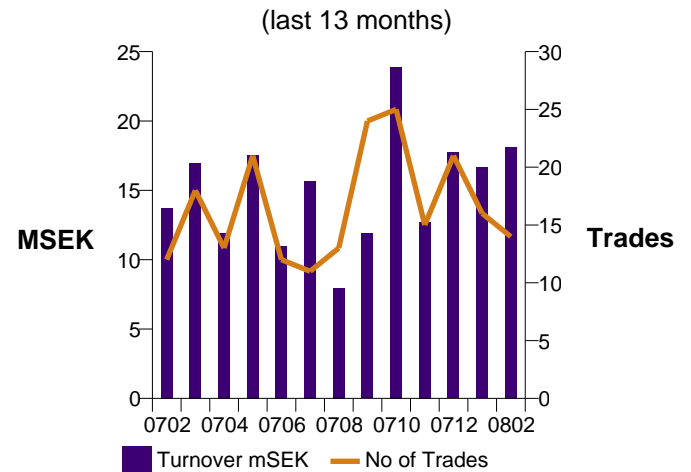
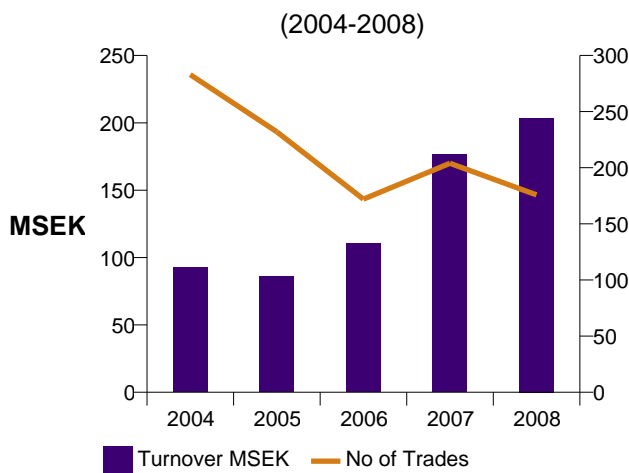
Member	February	YTD
Skandinaviska Enskilda Banken AB	38,16 %	38,17 %
Swedbank AB	34,71 %	33,66 %
Nordea Bank	14,28 %	14,62 %
HQ Bankaktiebolag	4,22 %	4,01 %
Svenska Handelsbanken AB	3,32 %	3,48 %
Other	5,31 %	6,07 %



### Trading during the latest month

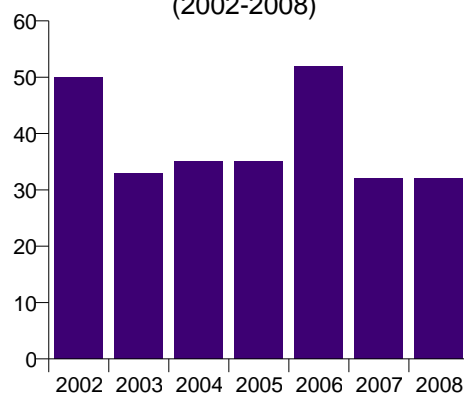
Turnover, MSEK	18
Nbr. of trades	14

### Nominal turnover and number of trades



Note: Annual turnover 2008 is estimated (based on 43 out of 252 trading days)

### Nbr of bonds outstanding (2002-2008)



Number of bonds outstanding as of February 2008: 32

### Market Shares, Top 5 in turnover

Member	February	YTD
Skandinaviska Enskilda Banken AB	50,00 %	49,93 %
Nordnet Bank AB	27,61 %	34,95 %
Avanza Bank AB	15,41 %	9,46 %
Danske Bank A/S	5,47 %	3,71 %
Nordea Bank	1,38 %	1,35 %
Other	0,14 %	0,59 %

### Market Shares, Top 5 in No of trades

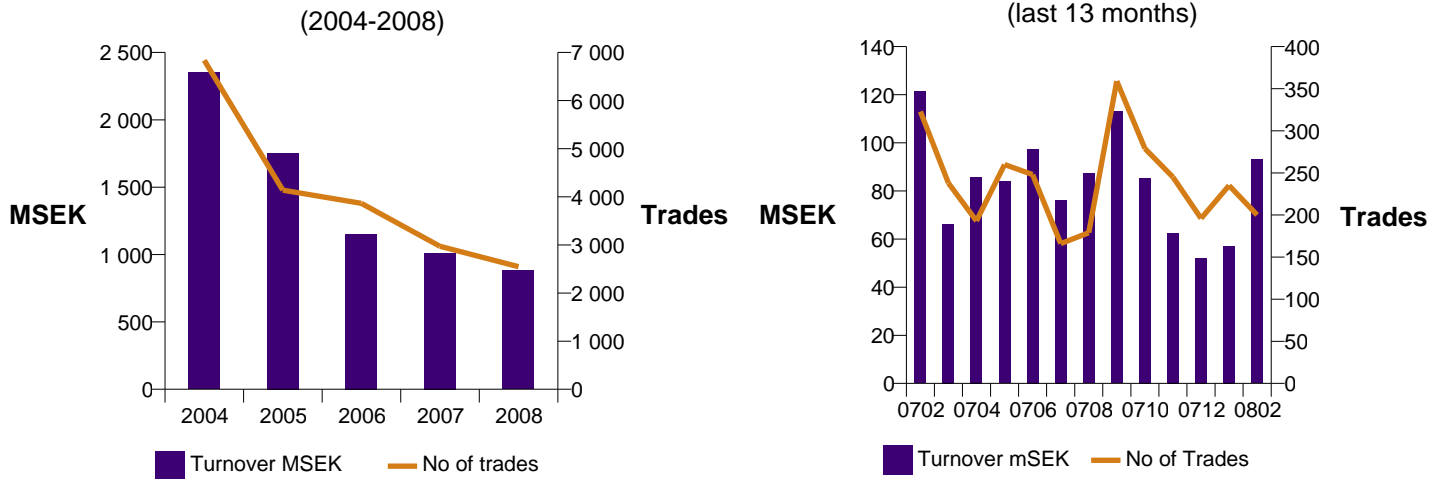
Member	February	YTD
Skandinaviska Enskilda Banken AB	50,00 %	48,33 %
Nordnet Bank AB	17,86 %	21,67 %
Avanza Bank AB	14,29 %	8,33 %
Danske Bank A/S	10,71 %	6,67 %
Svenska Handelsbanken AB	3,57 %	11,67 %
Other	3,57 %	3,33 %



### Trading during the latest month

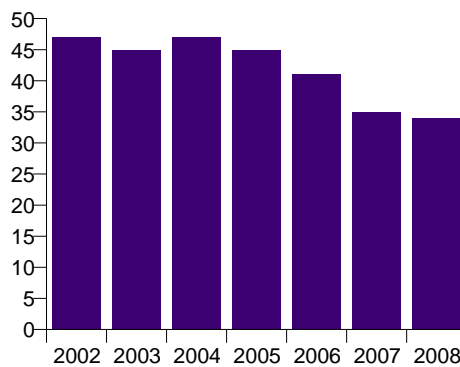
Turnover, MSEK	93
Nbr. of trades	200

### Nominal turnover and number of trades



Note: Annual turnover 2008 is estimated (based on 43 out of 252 trading days)

### Nbr of bonds outstanding (2002-2008)



Number of bonds outstanding as of February 2008: 34

### Market Shares, Top 5 in turnover

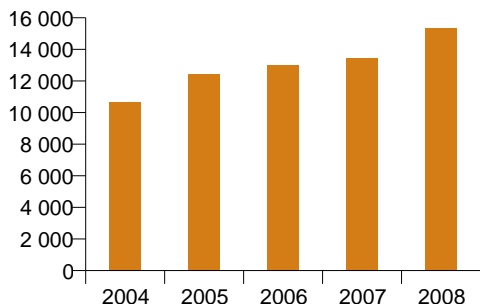
Member	February	YTD
Öhman J:or Fondkommission AB, E.	53,06 %	33,13 %
Skandinaviska Enskilda Banken AB	29,08 %	37,16 %
Danske Bank A/S	5,51 %	6,38 %
Nordea Bank	5,13 %	7,85 %
Svenska Handelsbanken AB	4,49 %	9,30 %
Other	2,73 %	6,18 %

### Market Shares, Top 5 in No of trades

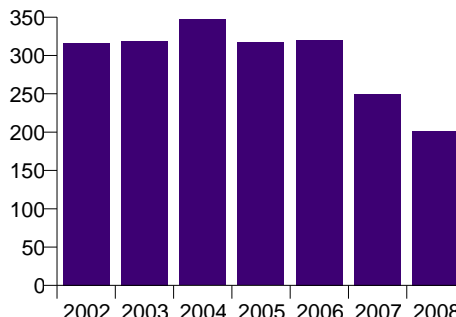
Member	February	YTD
Skandinaviska Enskilda Banken AB	34,75 %	37,01 %
Swedbank AB	26,75 %	23,10 %
Svenska Handelsbanken AB	14,25 %	17,70 %
Nordea Bank	12,50 %	12,41 %
Danske Bank A/S	6,00 %	5,06 %
Other	5,75 %	4,71 %



**Total nominal turnover in SEK billion**  
(2004-2008)



**Nbr of bonds outstanding**  
(2002-2008)

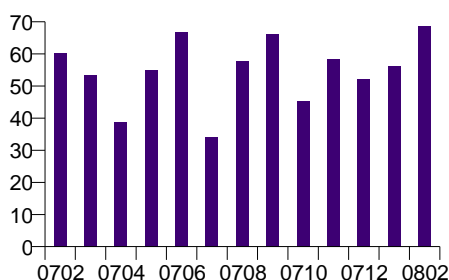


Note: Annual turnover 2008 is estimated (based on 43 out of 252 trading days)

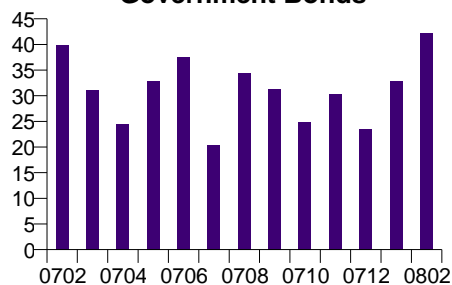
**Nominal turnover, daily averages in SEK billion**

(last 13 months)

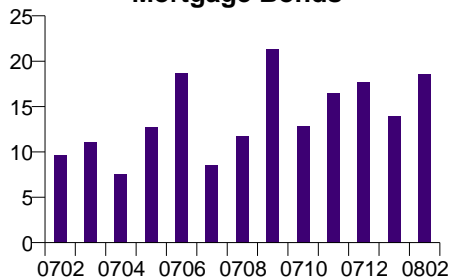
**Total**



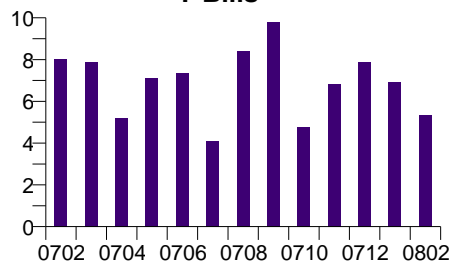
**Government Bonds**



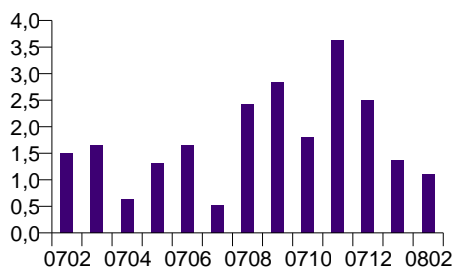
**Mortgage Bonds**



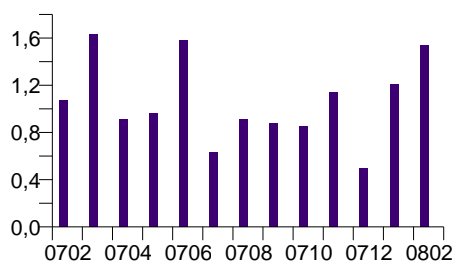
**T-Bills**



**Certificates**



**Inflation Linked Bonds**



Note: Benchmark Bonds include: Certificates, Government bonds, Inflation linked bonds, Mortgage bonds and T-bills