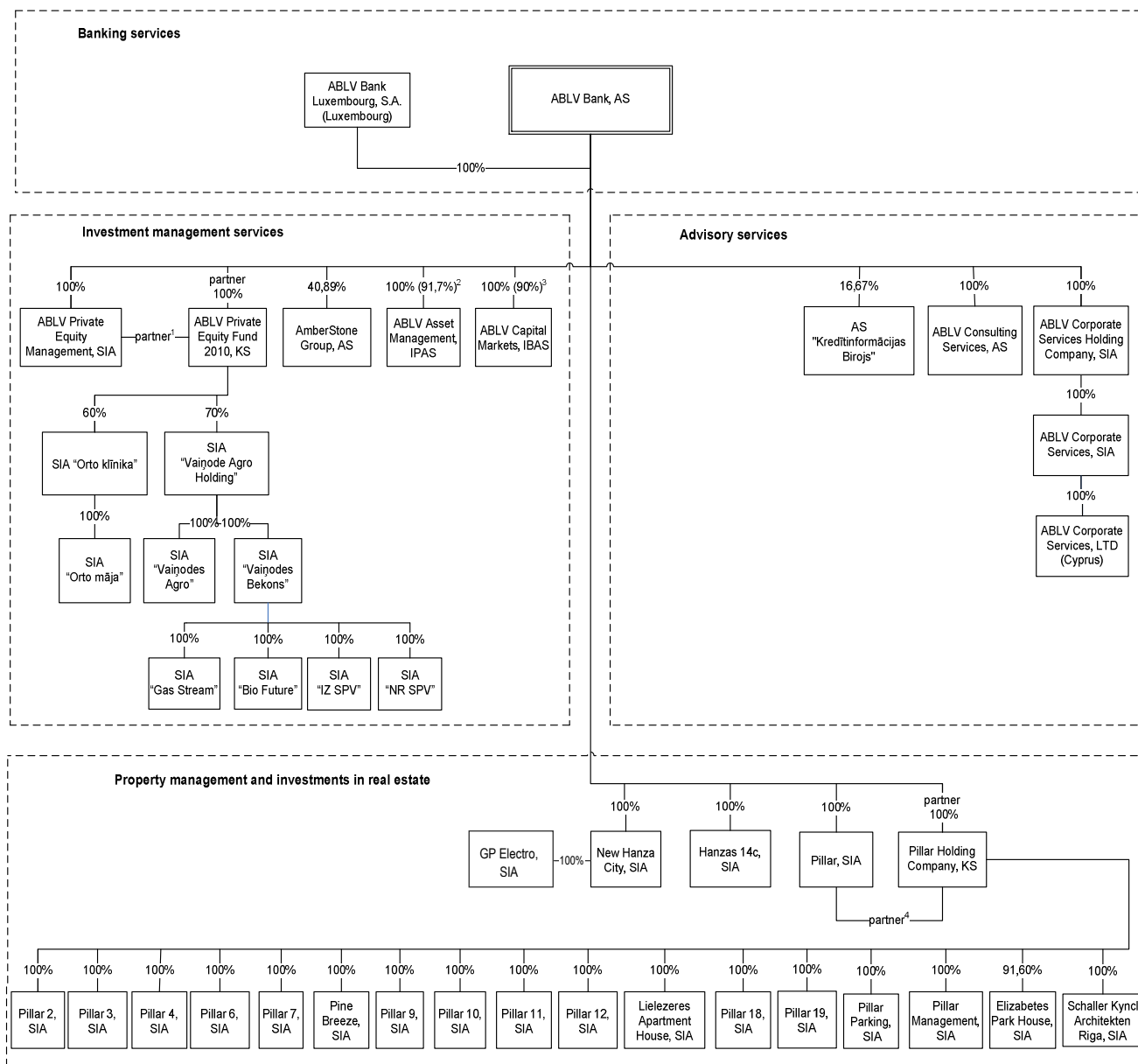




## Structure of ABLV Group



<sup>1</sup> Managing partner of ABLV Private Equity Fund 2010, KS.

<sup>2</sup> 100% of the share capital with voting rights (91.7% of total share capital).

<sup>3</sup> 100% of the share capital with voting rights (90% of total share capital).

<sup>4</sup> Managing partner of Pillar Holding Company, KS.