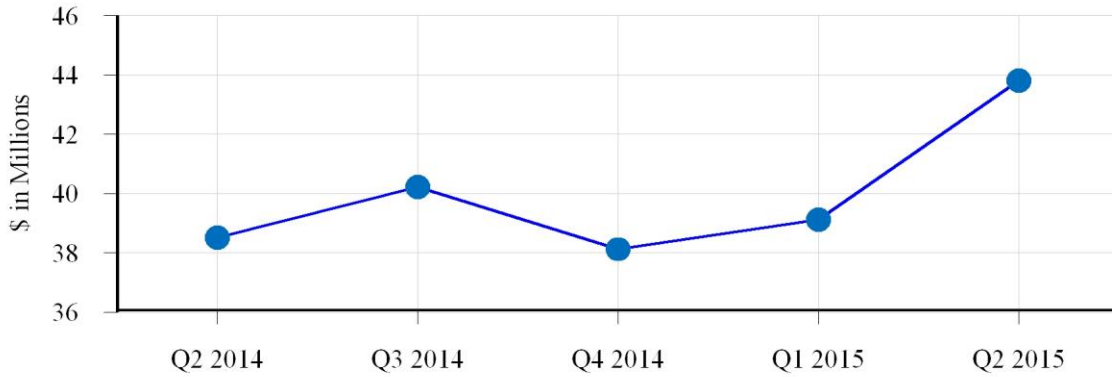
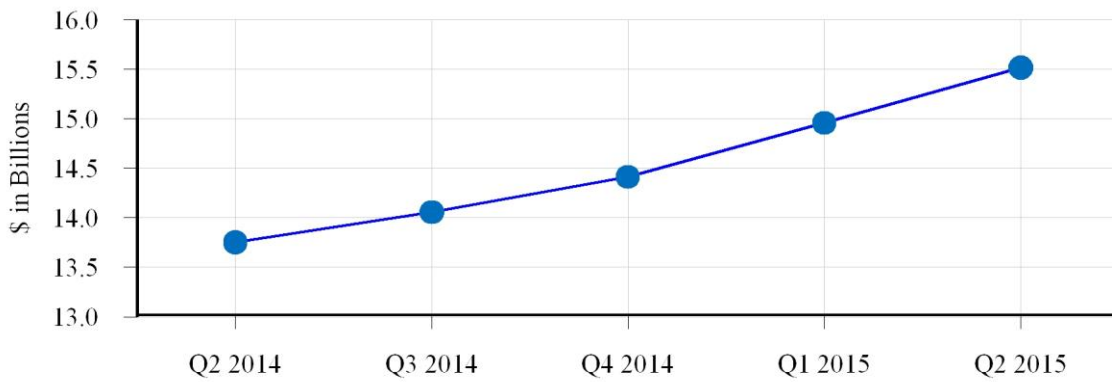


The graphs below illustrate certain highlights of the second quarter of 2015.

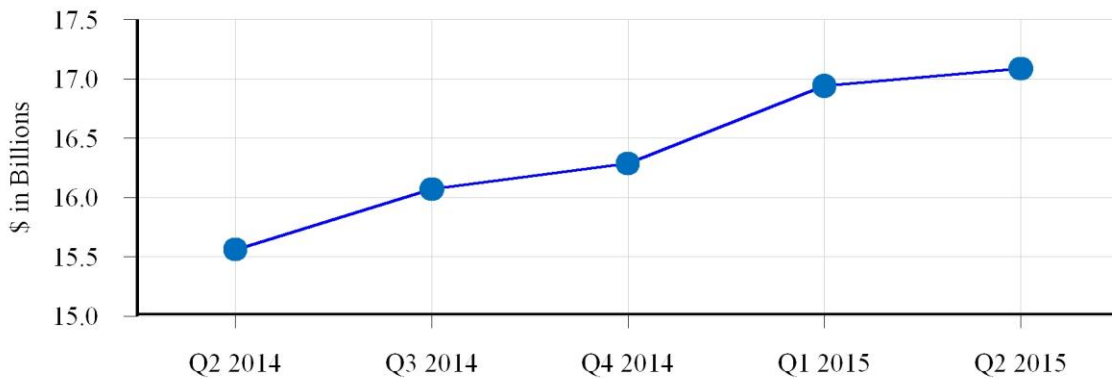
Net Income



Total Loans, excluding Covered Loans and Mortgage Loans Held-For-Sale



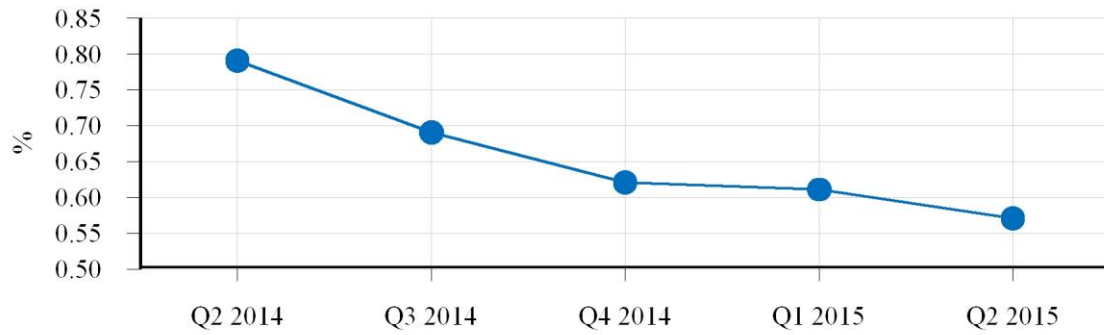
Total Deposits



Mortgage Loans Originated or Purchased to be Sold



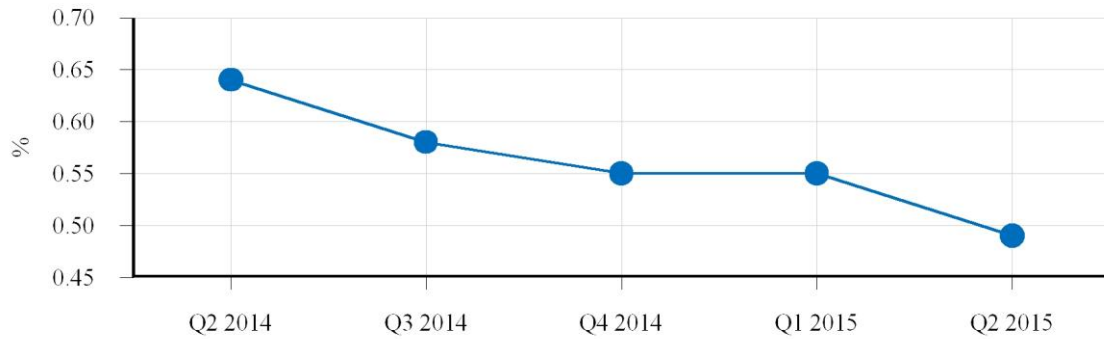
Non-Performing Assets as a Percent of Total Assets



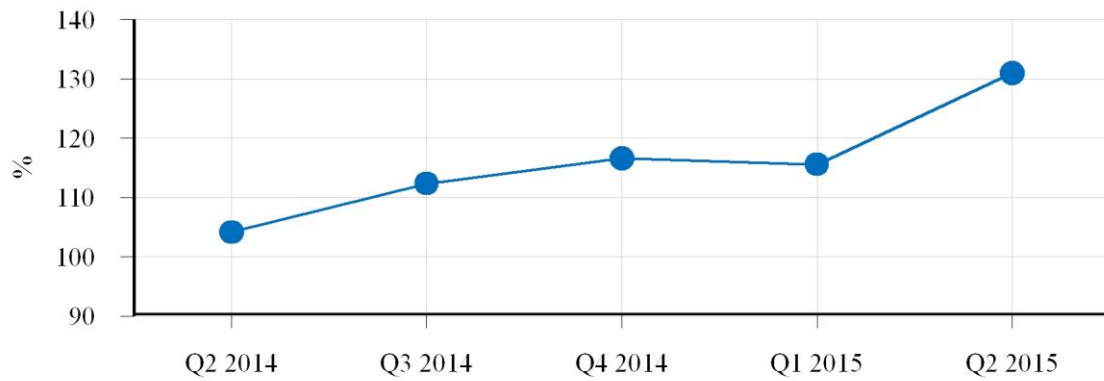
Non-Performing Loans



Non-Performing Loans as a percent of Total Loans, excluding covered loans



Allowance for Loan Losses as a percent of Total Non-Performing Loans



Annualized Net Charge-Off as a percent of Average Total Loans, excluding covered loans

