

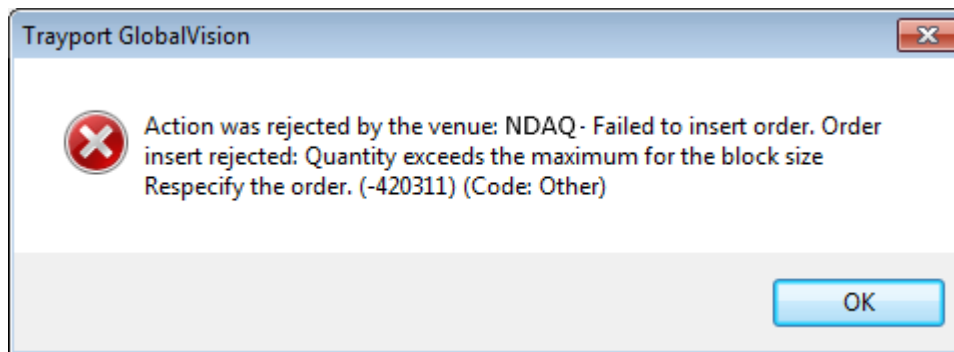
IT – Trayport GV Portal - Issue solved - Trades with special attributes matched at Nasdaq not visible in Trayport Joule or GV8 (57/16)

In recent weeks there has been an issue with the Nasdaq Trayport interface, which in certain circumstances resulted in details of a matched trade not appearing within the Trayport Joule or GV8 Trade Window.

The issue was related to the handling of volumes with decimal places in trade updates from the exchange. A fix for the issue will be released by Nasdaq after trading close tonight, effective from the open of trading on Wednesday 12th October.

In order to resolve the issue decimal places are now permitted for trade volumes within Joule and GV8. As this setting is shared for Orders and Trade updates, order entry within Joule or GV8 will also permit volumes with decimal places.

In accordance with exchange rules, order volumes must be integers. If an order with a non-integer volume is entered, it will be rejected by the exchange with the following error message:



We are sorry for any inconvenience caused by this issue.

In the event of any uncertainty, the Nasdaq Clearing Workstation (CW2) provides an accurate view of all trades concluded on Nasdaq.

For questions or comments, please contact:

Nasdaq Commodities:

Market Place – Financial Market
+47 67 52 80 37
Desken@nasdaq.com



Petter Marthinsen
Project Director
+47 67 10 85 16
petter.marthinsen@nasdaq.com

Trayport:
Trayport Support
+44 20 7960 5555
Support@trayport.com