



Press Release, January 3, 2007

# Record year for OMX Nordic Exchange

**2006 was a record year for OMX Nordic Exchange in terms of trading. All time high figures were reached in average daily turnover, number of trades per day and number of derivatives contracts per day.**

- Average daily share turnover amounted to SEK 38,755 (28,209) million.
- The turnover rate was 132 (117) percent.
- The average daily derivative trading turnover amounted to 553,793 (475,885) contracts.
- The number of listed companies amounted to 791 (741).
- The number of new companies on the main market and First North amounted to 103 (41).
- The number of members amounted to 159 (166).

## Highlights 2006

- The total share trading on OMX Nordic Exchange in 2006 amounted to SEK 9,731 billion, corresponding to an average daily turnover of SEK 38,755 million, thus making 2006 the best year ever in terms of trading (2005: SEK 28,209 million per day).
- The number of trades per day for OMX Nordic Exchange also reached an all time high, with 124,484 trades per day during 2006 (2005: 84,667 trades per day).
- The derivatives trading on OMX Nordic Exchange in 2006 amounted to 553,793 contracts per day, which is the best year ever (2005: 475,885 contracts per day).

Reported figures concern 2006, comparable figures pertain to 2005, unless otherwise stated.

All statistics are also available at [www.omxgroup.com/nordicexchange/Themarket/Statisticsanalysis](http://www.omxgroup.com/nordicexchange/Themarket/Statisticsanalysis)

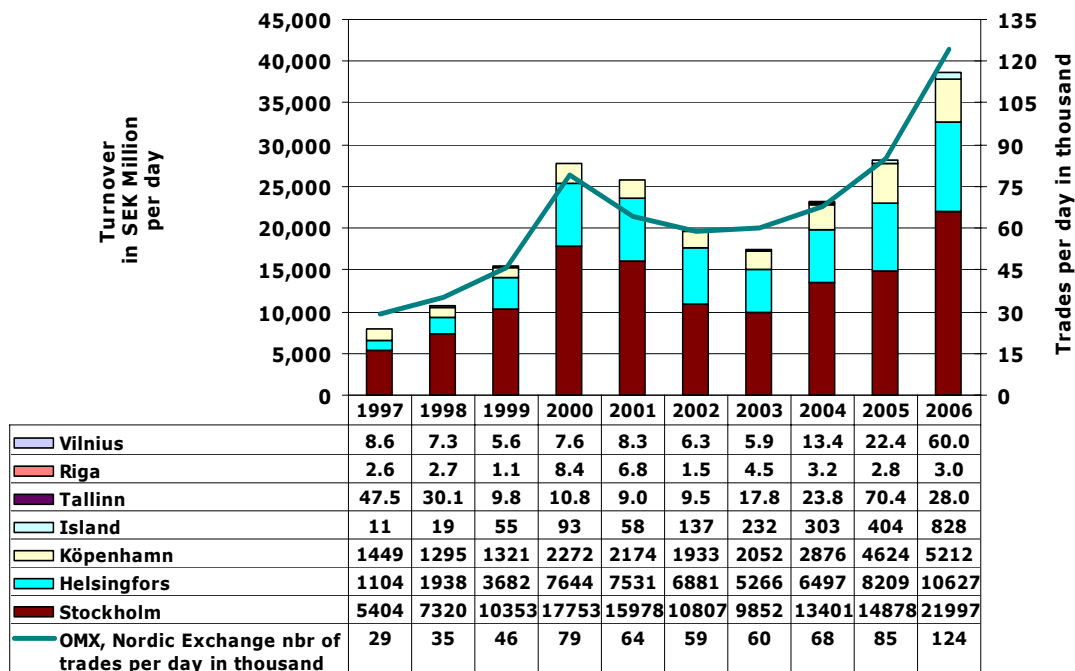
## For more information, please contact

Anders Rubensson, OMX Nordic Exchange Stockholm	+46 8 405 63 03
Outi Ylitalo, OMX Nordic Exchange Helsinki	+358 9 6166 7599
Ellen-Margrethe Soelberg, OMX Nordic Exchange Copenhagen	+45 33 77 04 30
Helga Björk Eiriksdóttir, OMX Nordic Exchange Iceland	+354 525 2844
Tex Vertmann, OMX Nordic Exchange Tallinn	+372 640 88 62
Inese Purgaile, OMX Nordic Exchange Riga	+371 721 24 31
Gintare Blazyte, OMX Nordic Exchange Vilnius	+370 5 272 13 71

**About OMX** | OMX is a leading expert in the exchange industry. Through the Nordic Exchange, OMX offers access to approximately 80 percent of the Nordic and Baltic securities market. The Nordic Exchange is a term used for marketing purposes and is not a legal entity. It describes the common offering from the Helsinki Stock Exchange, Copenhagen Stock Exchange, Stockholm Stock Exchange, Iceland Stock Exchange, Tallinn Stock Exchange, Riga Stock Exchange and Vilnius Stock Exchange. OMX' integrated technology solutions cross the transaction chain enabling efficient securities transactions for over 60 exchange organizations in more than 50 countries. OMX is a Nordic Large Cap company in the Financial sector on the OMX Nordic Exchange. For more information, please visit [www.omxgroup.com](http://www.omxgroup.com).

## The Nordic Exchange

**OMX AB (publ)**. SE-105 78 Stockholm. SWEDEN. Tel. +46 8 405 60 00. Fax +46 8 405 60 01. Visiting Address: Tullvaktsvägen 15  
Reg. No. 556243-8001. [www.omxgroup.com](http://www.omxgroup.com)



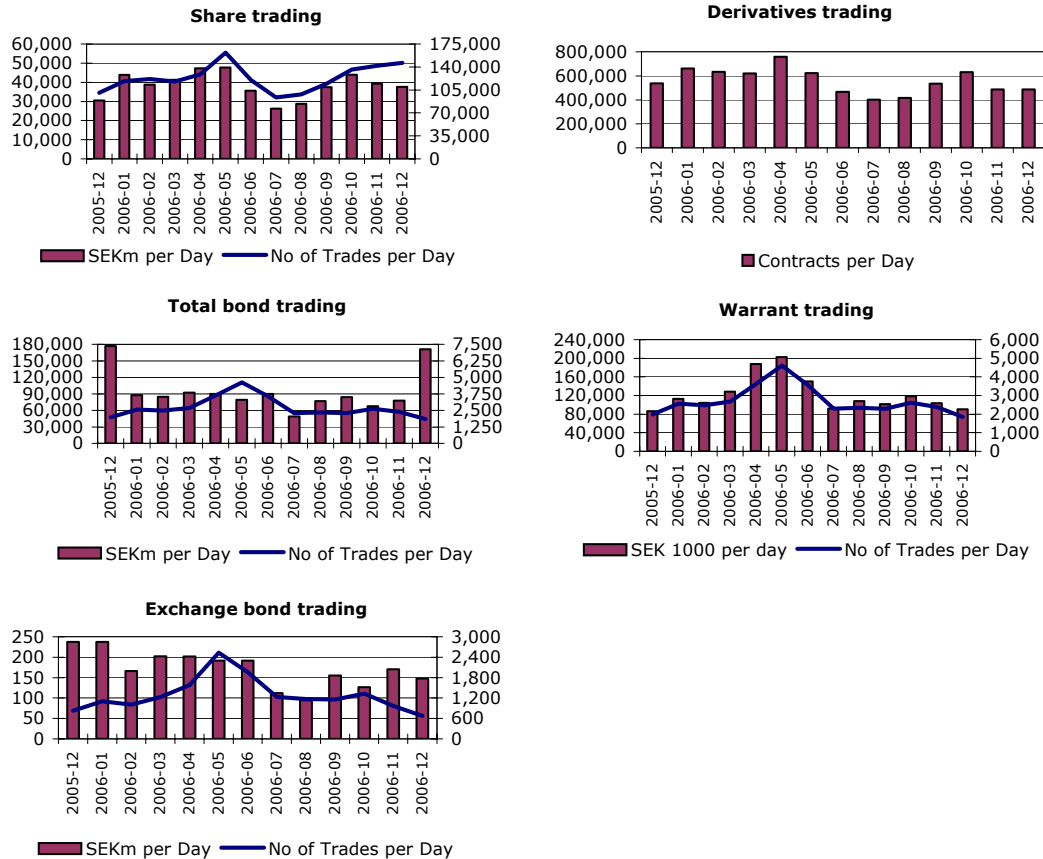
### New Members 2006

- FondsFinans ASA in Stockholm
- Knight Equity Markets Ltd in Stockholm, Helsinki and Copenhagen
- Thenberg & Kinde Fondkommision AB in Stockholm
- SEB AB in Helsinki
- HSBC Bank Plc in Helsinki and Copenhagen
- Bear Sterns Int. Ltd in Helsinki
- FIH Erhvervsbank A/S in Copenhagen
- Erik Penser Fondkommision AB in Copenhagen
- BNP Paribas Arbitrage SNC in Stockholm and Helsinki
- Bankaktiebolaget Avanza in Helsinki and Copenhagen.
- FIM Securities Ltd in Copenhagen.
- Danske Bank A/S in Tallinn, Riga and Vilnius
- Latvijas Hipoteku un zemes banka in Tallinn and Vilnius
- Nordea Bank Finland Plc in Vilnius
- MP Investment Bank in Tallinn, Riga and Vilnius
- Timber Hill Europe AG in Helsinki and Copenhagen
- SAXO Bank in Copenhagen
- Aktia Savings Bank Plc in Stockholm
- Nyenburgh Beheer B.V. in Copenhagen and Helsinki
- AS Latvijas Krajbanka in Tallinn and Vilnius
- Baltijos vertybiniai popieriai in Riga and Tallinn
- AS Parex Banka in Vilnius
- DnB Nor Bank ASA in Helsinki
- Carnegie Bank A/S in Stockholm
- FMS04 in Copenhagen

## Turnover and Market cap per sector and segment<sup>8</sup>

SEK Billion December 2006			
GICS	Turnover	Market cap	% of total market cap
<b>N10 Energy</b>	16.1	135.0	1.7%
<b>N15 Materials</b>	60.6	614.5	7.7%
<b>N20 Industrials</b>	162.4	1,887.8	23.6%
<b>N25 Consumer Discretionary</b>	48.4	620.6	7.8%
<b>N30 Consumer Staples</b>	17.5	243.4	3.0%
<b>N35 Health Care</b>	56.0	596.8	7.5%
<b>N40 Financials</b>	123.1	1,887.0	23.6%
<b>N45 Information Technology</b>	138.4	1,169.8	14.6%
<b>N50 Telecom Services</b>	23.5	663.7	8.3%
<b>N55 Utilities</b>	13.2	174.8	2.2%
<b>Large cap</b>	599.0	7,062	88.3%
<b>Mid cap</b>	48.6	757	9.5%
<b>Small cap</b>	11.6	174	2.2%

## Trading in shares, derivatives, warrants and bonds



2006	Stockholm	Helsinki	Copenhagen	Iceland	Tallinn	Riga	Vilnius	Total
<b>Companies</b>								
<b>Main market</b>	<b>276</b>	<b>136</b>	<b>190</b>	<b>24</b>	<b>16</b>	<b>40</b>	<b>42</b>	<b>712*</b>
<b>New listings</b>								
- December 2006	4	-	6	2	-	1	-	13
- Year 2006	21	6	20	5	2	3	1	58
- Year 2005	9	5	6	2	3	7	-	32
<b>First North</b>	<b>69</b>		<b>10</b>					<b>79</b>
<b>New listings</b>								
- December 2006	6		1					7
- Year 2006	36		9					45
<b>Bonds</b>	<b>1 696</b>	<b>330</b>	<b>2 279</b>	<b>356</b>	<b>6</b>	<b>33</b>	<b>29</b>	<b>4 729</b>
- New listings dec	122	11	19	8	-	2	1	163
<b>Covered warrants</b>	<b>1 129</b>	<b>339</b>						<b>1 468</b>
- New listings dec	218	114						332
<b>Members**</b>	<b>87</b>	<b>54</b>	<b>56</b>	<b>27</b>	<b>23</b>	<b>20</b>	<b>29</b>	<b>159**</b>
- New members dec	-	-	-	-	-	-	-	
* Excluding 12 multiple listings								
** Excluding 137 members that are members of more than one exchange								
***Unique new members								

## New companies on the main market

Company	Segment	Sector	Exchange
Husqvarna AB	Large	Consumer Discretionary	Stockholm
Old Mutual Plc	Large	Financials	Stockholm
Ahlstrom Oyj	Large	Materials	Helsinki
Orion Oyj	Large	Health Care	Helsinki
OMX AB	Large	Financials	Iceland
Melker Schörling AB	Large	Financials	Stockholm
Exista hf.	Large	Financials	Iceland
LogicaCMG Plc (Xternal list)	Large	Information Technology	Stockholm
Rella Holding A/S	Mid	Consumer Discretionary	Copenhagen
KappAhl Holding AB	Mid	Consumer Discretionary	Stockholm
Gant Company AB	Mid	Consumer Discretionary	Stockholm
PA Resources AB	Mid	Energy	Stockholm
Formuepleje Safe A/S	Mid	Financials	Copenhagen
Formuepleje Epikur A/S	Mid	Financials	Copenhagen
Formuepleje Penta A/S	Mid	Financials	Copenhagen
FIM Group Oyj	Mid	Financials	Helsinki
Lawson Software Inc.	Mid	Information Technology	Stockholm
Oriola-KD Oyj	Mid	Health Care	Helsinki
Biovitrum AB	Mid	Health Care	Stockholm
Securitas Direct AB	Mid	Consumer Discretionary	Stockholm
Securitas Systems AB	Mid	Industrials	Stockholm
Outokumpu Technology Oyj	Mid	Industrials	Helsinki
LifeCycle Pharma A/S	Mid	Health Care	Copenhagen
BE Group AB	Mid	Industrials	Stockholm
Rezidor Hotel Group AB	Mid	Consumer Discretionary	Stockholm
Sparekassen Himmerland A/S	Mid	Financials	Copenhagen
Lindab International AB	Mid	Industrials	Stockholm
Hf. Eimskipafélag Islands	Mid	Industrials	Iceland
Icelandair Group Holding hf.	Mid	Financials	Iceland
Vilkyskiu Pienine AB	Small	Consumer Staples	Vilnius
KapitalPleje A/S	Small	Financials	Copenhagen
Formuepleje Pareto A/S	Small	Financials	Copenhagen
Formuepleje Optimum A/S	Small	Financials	Copenhagen
Catena AB	Small	Financials	Stockholm
Diös Fastigheter AB	Small	Financials	Stockholm
Curalogic A/S	Small	Health Care	Copenhagen
EpiCept Corporation	Small	Health Care	Stockholm
AS Eesti Ehitus	Small	Industrials	Tallinn
cBrain A/S	Small	Information Technology	Copenhagen
Salcomp Oyj	Small	Information Technology	Helsinki
AS Valters un Rapa	Small	Not classified according to GICS	Riga
Svithoid Tankers AB	Small	Energy	Stockholm
Formuepleje LimiTtTellus A/S	Small	Financials	Copenhagen
Carl Lamm AB	Small	Consumer Discretionary	Stockholm
Mondo A/S	Small	Consumer Discretionary	Copenhagen
P/F Atlantic Petroleum	Small	Energy	Copenhagen
Formuepleje Merkur A/S	Small	Financials	Copenhagen
Olympic Entertainment Group	Small	Consumer Discretionary	Tallinn
Griffin III Berlin A/S	Small	Financials	Copenhagen
Rovsing A/S	Small	Industrials	Copenhagen
First Farms A/S	Small	Consumer Staples	Copenhagen
LinkMed AB	Small	Financials	Stockholm

Company	Segment	Sector	Exchange
AS Protezenas un ortopedijas centrs	Small	Not classified according to GICS	Riga
AS Olaines kudra	Small	Not classified according to GICS	Riga
Tilgin AB	Small	Information Technology	Stockholm
ChemoMetec A/S	Small	Information Technology	Copenhagen
Rejlerkoncernen AB	Small	Industrials	Stockholm
Comendo A/S	Small	Information Technology	Copenhagen
Teymi hf.	Small	Telecommunication Services	Iceland

### New companies on First North

Company	Sector	Country
2Entertain AB	Consumer Discretionary	Sweden
360 Holding AB	Consumer Discretionary	Sweden
Electra Gruppen AB	Consumer Discretionary	Sweden
Forshem Group AB	Consumer Discretionary	Sweden
Gymgrossisten Nordic AB	Consumer Discretionary	Sweden
Kontakt East Holding AB	Consumer Discretionary	Sweden
Lübker Golf A/S	Consumer Discretionary	Denmark
Mediaprovider Scandinavia AB	Consumer Discretionary	Sweden
Nextlink AB	Consumer Discretionary	Sweden
Nordic Service Partners Holding AB	Consumer Discretionary	Sweden
Rasta Group AB	Consumer Discretionary	Sweden
Redbet Holding AB	Consumer Discretionary	Sweden
Swedol AB	Consumer Discretionary	Sweden
Travel Partner AB	Consumer Discretionary	Sweden
Unlimited Travel Group AB	Consumer Discretionary	Sweden
Värmekyl Grossisten Scandinavia AB	Consumer Discretionary	Sweden
Gourmet Bryggeriet A/S	Consumer Staples	Denmark
Allokton AB	Financials	Sweden
Insplanet AB	Financials	Sweden
Optegra AB	Financials	Sweden
Russian Real Estate Investment Company AB	Financials	Sweden
Varyag Resources AB	Financials	Sweden
Aresa A/S	Health Care	Denmark
Danske Laegers Vaccinations Service A/S	Health Care	Denmark
Genovis AB	Health Care	Sweden
NanoCover A/S	Health Care	Denmark
New Science Svenska AB	Health Care	Sweden
Drillcon AB	Industrials	Sweden
El & Industrimontage AB	Industrials	Sweden
Opus Prodox AB	Industrials	Sweden
PV Enterprise Sweden AB	Industrials	Sweden
SCF Technologies A/S	Industrials	Denmark
SRAB Shipping AB	Industrials	Sweden
Svensk Internetrekrytering AB	Industrials	Sweden

Company	Sector	Country
Axlon Holding AB	Information Technology	Sweden
C.I.S.L. Gruppen AB	Information Technology	Sweden
Notabene.net A/S	Information Technology	Denmark
Seamless Distribution AB	Information Technology	Sweden
Sky Communication in Sweden AB	Information Technology	Sweden
Strand Interconnect AB	Information Technology	Sweden
WirTek A/S	Information Technology	Denmark
Zepto Computers A/S	Information Technology	Denmark
Nordic Mines AB	Materials	Sweden
Termoregulator Holding AB	Materials	Sweden

<b>OMX, the Nordic Exchange<sup>1)</sup></b>					
<b>Share Trading<sup>2)</sup></b>	<b>Dec 2006<sup>3)</sup></b>	<b>Nov 2006</b>	<b>Dec 2005</b>	<b>Year 2005</b>	<b>Year 2006</b>
<b>Value, SEK billions, total</b>	<b>705.5</b>	<b>863.7</b>	<b>626.1</b>	<b>7,135.8</b>	<b>9,730.6</b>
Stockholm Stock Exchange	400.7	492.8	330.7	3,764.2	5,521.2
Helsinki Stock Exchange	159.0	231.9	159.5	2,076.9	2,667.3
Copenhagen Stock Exchange	98.0	126.1	124.2	1,169.8	1,313.4
Iceland Stock Exchange	36.2	11.6	10.2	101.0	206.2
Tallinn Stock Exchange	0.8	0.9	0.8	17.8	7.1
Riga Stock Exchange	0.1	0.1	0.1	0.7	0.8
Vilnius Stock Exchange	10.8	0.3	0.6	5.5	14.6
<b>Value per business day, SEK millions, total</b>	<b>37,598</b>	<b>39,261</b>	<b>30,196</b>	<b>28,209</b>	<b>38,755</b>
Stockholm Stock Exchange	21,088	22,400	15,749	14,878	21,997
Helsinki Stock Exchange	8,834	10,540	7,974	8,209	10,627
Copenhagen Stock Exchange	5,156	5,731	5,917	4,624	5,212
Iceland Stock Exchange	1,908	529	486	404	828
Tallinn Stock Exchange	43	41	38	70	28
Riga Stock Exchange	4	4	2	3	3
Vilnius Stock Exchange	566	17	32	22	60
<b>Number of trades, total</b>	<b>2,745,627</b>	<b>3,117,401</b>	<b>2,088,331</b>	<b>21,418,268</b>	<b>31,388,359</b>
<b>Number of trades per business day, total</b>	<b>146,055</b>	<b>141,746</b>	<b>100,599</b>	<b>84,667</b>	<b>124,484</b>
Stockholm Stock Exchange	79,562	76,055	55,430	46,470	69,687
Helsinki Stock Exchange	37,897	38,087	23,783	21,264	32,245
Copenhagen Stock Exchange	26,535	25,769	20,085	15,720	21,043
Iceland Stock Exchange	445	373	355	310	515
Tallinn Stock Exchange	449	574	328	162	251
Riga Stock Exchange	156	125	144	150	140
Vilnius Stock Exchange	1,011	763	475	591	605
<b>Market value, SEK billion, total</b>	<b>8,435</b>	<b>7,911</b>	<b>7,154</b>	<b>7,163</b>	<b>8,435</b>
Stockholm Stock Exchange	4,275	3,930	3,507	3,507	4,275
Helsinki Stock Exchange	2,124	2,033	1,915	1,915	2,124
Copenhagen Stock Exchange	1,644	1,584	1,473	1,473	1,644
Iceland Stock Exchange	263	245	145	153	263
Tallinn Stock Exchange	41	37	28	28	41
Riga Stock Exchange	18	18	20	20	18
Vilnius Stock Exchange	70	64	65	65	70
<b>Turnover rate, %<sup>4)</sup></b>	<b>115</b>	<b>124</b>	<b>111</b>	<b>117</b>	<b>132</b>
<b>First North</b>					
Value per business day, SEK millions	207.4	226.0	107.0	60.4	168.4
Number of trades per business day	4,965	4,139	2,916	1,907	3,862
Market value, SEK billion	39.7	48.9	27.5	27.5	39.7



<b>Index Development</b>	<b>Dec 2006</b>	<b>Nov 2006</b>	<b>Dec 2005</b>	<b>Year 2005</b>	<b>Year 2006</b>
OMXN40 Index	1,208.3	1,141.0	1,019.2	1,019.2	1,208.3
Change in OMXN40 Index, %	5.9	-0.1	6.5	27.1	18.6
OMXS30 Index	1,147.3	1,068.1	960.0	960.0	1,147.3
Change in OMXS30 Index, %	7.4	-1.6	5.4	29.4	19.5
OMXH25 Index	2,910.5	2,772.2	2,301.3	2,301.3	2,910.5
Change in OMXH25 Index, %	5.0	0.7	5.6	25.7	26.5
OMXC20 Index	441.5	424.3	393.5	393.5	441.5
Change in OMXC20 Index, %	4.0	1.3	6.8	37.3	12.2
ICEX15 Index	6,410.5	6,176.5	5,534.4	5,534.4	6,410.5
Change in ICEX15 Index, %	3.8	-2.3	8.4	64.7	15.8
OMXT Index	856.3	780.9	664.1	664.1	856.3
Change in OMXT Index, %	9.7	8.9	-1.9	48.0	28.9
OMXR Index	655.5	637.5	676.3	676.3	655.5
Change in OMXR Index, %	2.8	4.8	6.1	63.5	-3.1
OMXV Index	492.7	459.0	448.8	448.8	492.7
Change in OMXV Index, %	7.3	9.9	0.3	52.9	9.8

<b>Bond Trading</b>	<b>Dec 2006</b>	<b>Nov 2006</b>	<b>Dec 2005</b>	<b>Year 2005</b>	<b>Year 2006</b>
<b>Value, SEK millions, total</b>					
Exchange traded	2,805	3,739	4,973	56,892	41,653
Reported	3,245,780	1,707,708	3,703,481	24,022,598	21,703,647
<b>Value per business day, SEK millions, total</b>					
Exchange traded	148	171	237	225	166
Reported	170,831	77,623	176,357	94,951	86,336
<b>Value per business day, SEK millions, per exchange</b>					
<b>Stockholm Stock Exchange</b>					
Exchange traded	46	48	26	16	30
Reported	54,454	48,327	66,019	53,018	52,965
<b>Helsinki Stock Exchange</b>					
Reported	1.5	1.4	7.5	1.4	1.0
<b>Copenhagen Stock Exchange</b>					
Exchange traded	96	106	199	203	119
Reported	116,375	29,294	110,330	41,916	33,370
<b>Iceland Stock Exchange</b>					
Exchange traded	779	672	339	221	564
Reported	323	542	337	228	334
<b>Baltic markets</b>					
Exchange traded	6.46	16.13	13.22	5.97	17.03
Reported	0.00	0.03	0.04	15.63	0.04

<b>Derivative Trading<sup>5)</sup></b>	<b>Dec 2006</b>	<b>Nov 2006</b>	<b>Dec 2005</b>	<b>Year 2005</b>	<b>Year 2006</b>
<b>Volume in number of contracts</b>					
<b>Equity and fixed-income products, total</b>	<b>9,260,539</b>	<b>10,721,401</b>	<b>11,267,403</b>	<b>120,398,852</b>	<b>139,001,996</b>
<b>Share options and futures, total per business day</b>	261,049	283,267	335,159	310,119	352,084
Stockholm, Copenhagen and Helsinki Stock Exchange	206,322	191,990	265,293	212,908	246,333
Swedish products at EDX	23,473	32,854	30,148	33,853	39,784
Finnish products at Eurex	31,254	58,424	39,717	63,358	65,967
<b>Index options and futures, total per business day</b>	161,114	165,369	140,029	128,133	148,962
Stockholm and Copenhagen Stock Exchange	93,041	101,151	97,812	88,308	90,685
Swedish products at EDX	68,073	64,218	42,217	39,825	58,276
<b>Equity products, total per business day</b>	<b>422,163</b>	<b>448,636</b>	<b>475,188</b>	<b>438,252</b>	<b>501,045</b>
<b>Fixed-income products, total per business day<sup>6)</sup></b>	<b>65,234</b>	<b>38,700</b>	<b>61,355</b>	<b>37,633</b>	<b>52,748</b>
Short-term interest products	37,010	23,574	30,261	25,410	35,672
Long-term interest products	28,223	15,127	31,093	12,223	17,076
<b>Equity and fixed-income products, total per business day</b>	<b>487,397</b>	<b>487,336</b>	<b>536,543</b>	<b>475,885</b>	<b>553,793</b>
<b>Average Premium Value per business day, Stock Options, SEK</b>	<b>78.5</b>	<b>71.7</b>	<b>57.0</b>	<b>48.7</b>	<b>76.0</b>

<b>Covered Warrant Trading</b>	<b>Dec 2006</b>	<b>Nov 2006</b>	<b>Dec 2005</b>	<b>Year 2005</b>	<b>Year 2006</b>
<b>Value, SEK millions, total</b>	<b>1,654</b>	<b>2,280</b>	<b>1,753</b>	<b>13,625</b>	<b>31,180</b>
<b>Value per business day, SEK thousand, total</b>	<b>90,351</b>	<b>103,703</b>	<b>86,211</b>	<b>53,855</b>	<b>165,289</b>
Stockholm Stock Exchange	27,772	34,417	28,514	27,719	59,281
Helsinki Stock Exchange	62,579	69,286	57,697	26,136	106,009
<b>Number of trades, total</b>	<b>33,766</b>	<b>52,349</b>	<b>40,459</b>	<b>396,302</b>	<b>693,200</b>
<b>Number of trades per business day, total</b>	<b>1,838</b>	<b>2,380</b>	<b>1,982</b>	<b>1,566</b>	<b>3,677</b>
Stockholm Stock Exchange	674	968	826	914	1,769
Helsinki Stock Exchange	1,164	1,412	1,156	652	1,908

<b>ETF Trading/Investment funds<sup>7)</sup></b>	<b>Dec 2006</b>	<b>Nov 2006</b>	<b>Dec 2005</b>	<b>Year 2005</b>	<b>Year 2006</b>
<b>Value, SEK millions, total</b>	<b>23,913</b>	<b>22,461</b>	<b>26,311</b>	<b>147,749</b>	<b>207,279</b>
<b>Value per business day, SEK millions, total</b>	<b>1,276</b>	<b>1,026</b>	<b>1,257</b>	<b>585</b>	<b>829</b>
Stockholm Stock Exchange	226.3	274.4	387.6	186.2	181.5
Helsinki Stock Exchange	27.9	36.0	47.8	6.2	24.7
Copenhagen Stock Exchange	1,005.0	710.4	819.7	391.6	617.2
Iceland Stock Exchange	16.7	5.1	1.9	1.2	5.3
<b>Number of trades, total</b>	<b>122,498</b>	<b>106,087</b>	<b>152,258</b>	<b>703,423</b>	<b>1,049,397</b>
<b>Number of trades per business day, total</b>	<b>6,451</b>	<b>4,824</b>	<b>7,251</b>	<b>2,781</b>	<b>4,167</b>
Stockholm Stock Exchange	496	486	51	35	266
Helsinki Stock Exchange	7	9	7	5	8
Copenhagen Stock Exchange	5,944	4,327	7,192	2,740	3,892
Iceland Stock Exchange	3	2	1	1	2

<b>Trading days</b>	<b>Dec 2006</b>	<b>Nov 2006</b>	<b>Dec 2005</b>	<b>Year 2005</b>	<b>Year 2006</b>
Stockholmsbörsen	19	22	21	253	251
Helsingforsbörsen	18	22	20	253	251
Köpenhamnsbörsen	19	22	21	253	252
Iceland Stock Exchange	19	22	21	250	249
Tallinnbörsen	19	22	21	255	252
Rigabörsen	19	20	21	254	250
Vilniusbörsen	19	21	20	250	242
EDX London	19	22	21	253	251
Eurex	18	22	20	253	253

1) The reported figures pertain to OMX, the Nordic Exchange in total, unless otherwise stated. Stockholm Stock Exchange figures also include Xternal list. Helsinki Stock Exchange figures also include Prelist, BL Market and Swedish shares list. Copenhagen Stock Exchange figures include total share trading. Iceland Stock Exchange figures include Iceland Main list. Tallinn Stock Exchange figures include Baltic Main list, Baltic I-list and Baltic Free list. Riga Stock Exchange figures include Baltic Main list, Baltic I-list and Baltic Free list. Vilnius Stock Exchange figures include the Baltic Main list and Baltic I-list.

2) Share trading is influenced by extraordinary trading activity in TDC A/S on January 27 in connection with the result of a takeover bid for the company. The high trading activity in TDC has no impact on OMX's result. (TDC turnover by January, 27: EUR 7 698 million) Affects ytd -and last 12 months figures

3) Exchange rate Average December: SEK/EUR: 9.04 DKK/EUR: 7.45 Ultimo December: SEK/EUR: 9.05 DKK/EUR: 7.46

4) The turnover velocity is estimated as total turnover during the period divided by the number of business days during the period multiplied by 250 and divided by the average market value during the period.

5) The reported figures pertain to OMX in total, unless otherwise stated.

6) Only Stockholm Stock Exchange and EDX London figures.

7) Stockholm Stock Exchange, Helsinki Stock Exchange and Iceland Stock Exchange only trading in ETF:s. Copenhagen Stock Exchange only trading in Investment funds.

8) Turnover and Market cap per sector and segment include the Nordic list in Stockholm, Helsinki and Copenhagen Exchange.